

Opportunities in

AURIC

Aurangabad Industrial City

a **DMIC** node



Introduction

7. Infrastructure & Connectivity

- Easy access to infrastructure such as land, electricity, water, talent, suppliers etc.
- Robust connectivity: Ports, railways, airports and roads

6. Ease of Doing Business

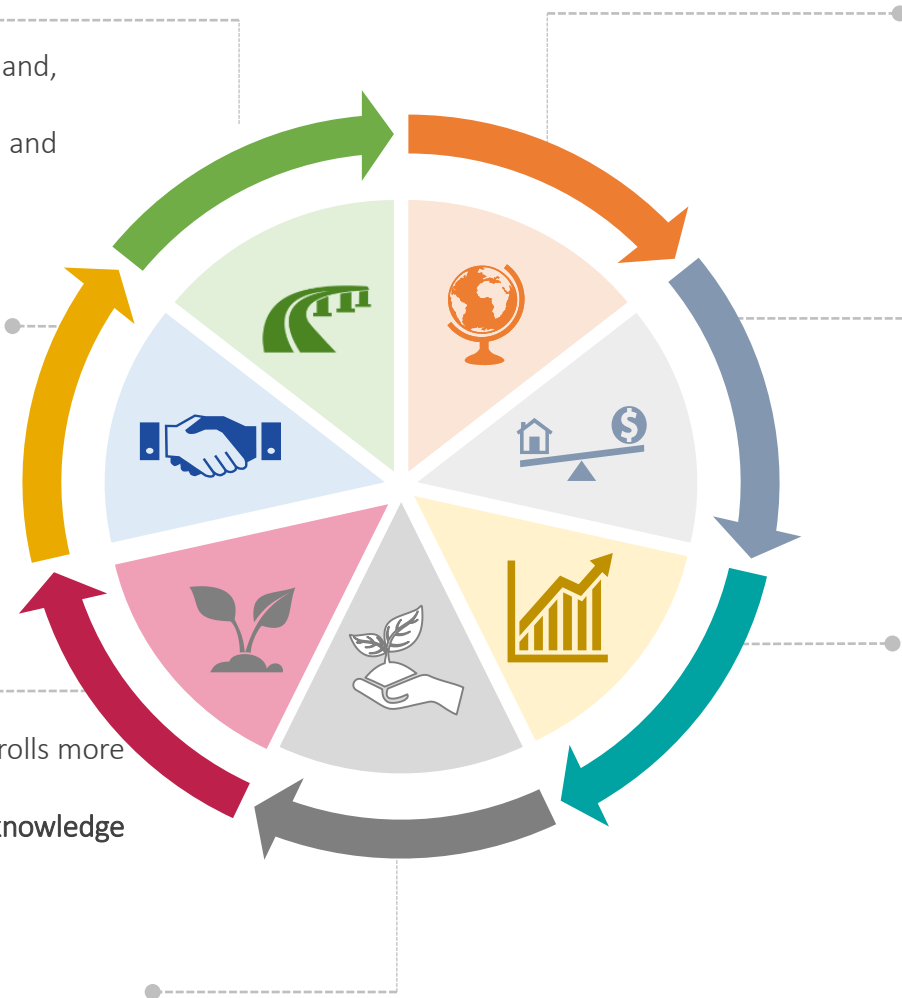
- Online Single Window System for applications
- MIDC as the Nodal point of contact for end to end support
- Progressive reforms across land, labor, electricity, environment etc.
- Stable and supportive political environment

5. Talent Availability

- One of the largest talent pools in India which enrolls more than 1.6 Mn students a year
- R&D facilities, clusters and associations for knowledge exchange across sectors

4. Investor Aftercare

- MIDC/AITL ensures all the requisite permissions are in place and engages with investors in case of any issues after grounding the investment.
- Dedicated investors facilitation and aftercare cell in the name of MAITRI (Maharashtra Industry, Trade and Investment Facilitation Cell)



1. Best FDI destination in India

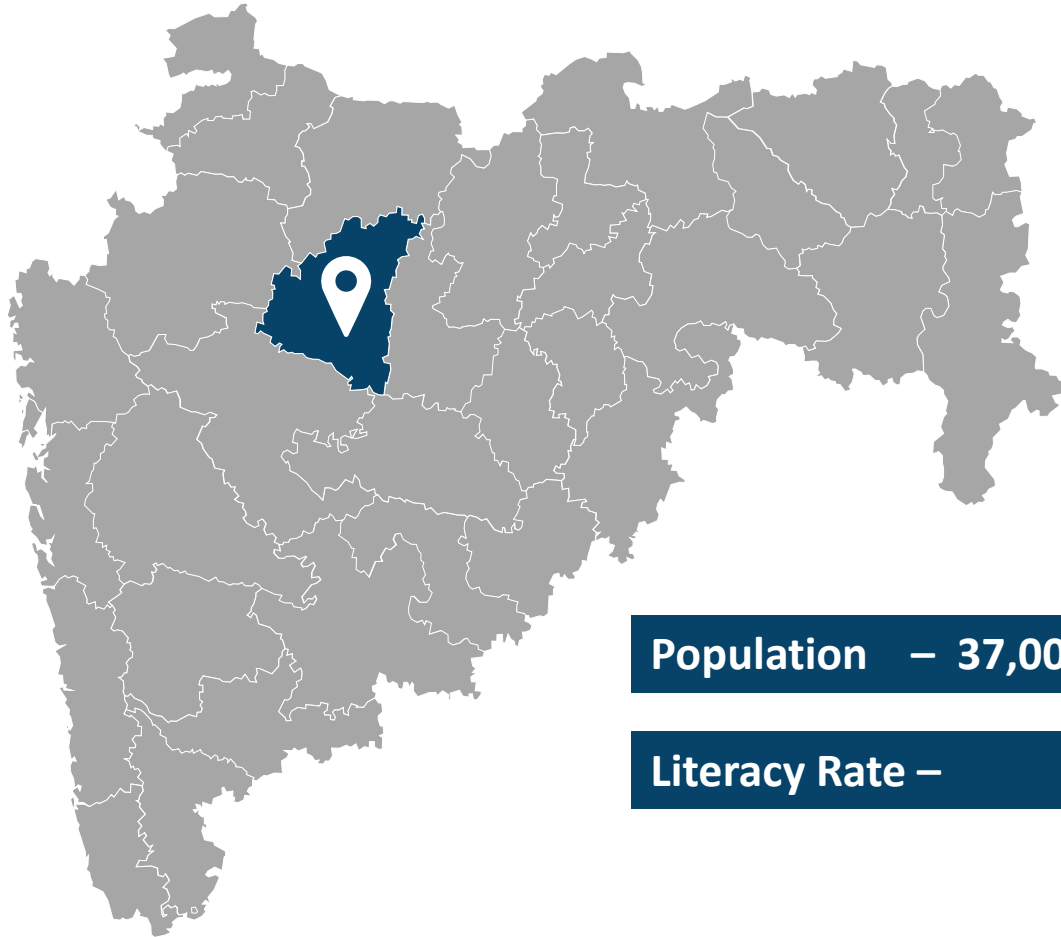
- Strategically located & contributes to ~15% to India's GDP, on average
- Accounts for more than 30% of the cumulative FDI in India
- Priority land allotment for FDI Investors

2. Operational Support

- MIDC/AITL is Special Planning authority to grant permissions for industries above 10 acres across Maharashtra
- Maharashtra eco-system for industries, including infrastructure and policy stands out against other states

3. Progressive Policy & robust incentives

- The state has recently come out with a Progressive Industrial Policy in April 2019
- Only state in India to offer SGST rebate on Gross Basis.
- Cabinet Subcommittee and High Power Committee to decide on the customized package of incentives.
- Maharashtra is the only state in India which has disbursed more than USD 600 million + in lieu of various incentives during the year 2018-19



Population – 37,00,000

Literacy Rate – 79%



Educational Institutes

Schools:	3025
General Colleges:	66
Technical Colleges:	31



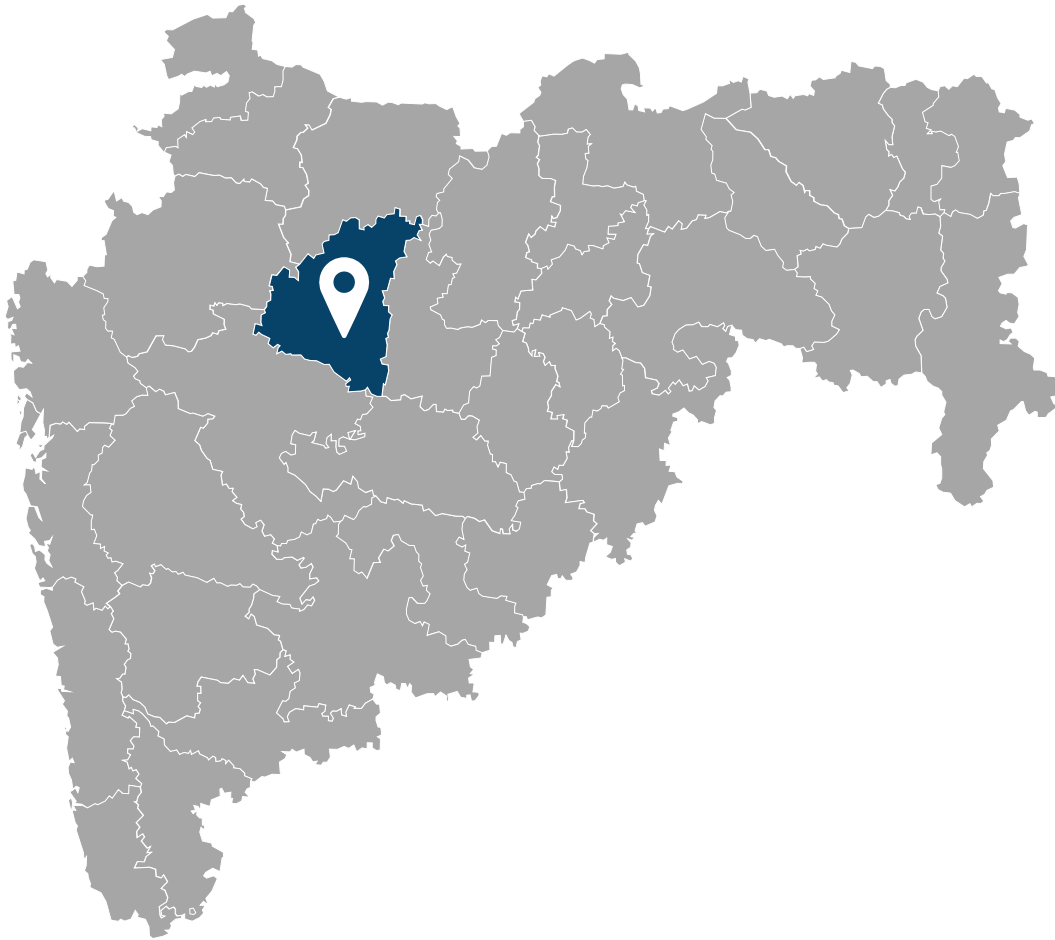
Skill Centers

Aurangabad district has a total of 16 Industrial Training Institutes (ITIs) /Industrial Training Centers (ITCs)



Healthcare Centers

Sub Center:	216
PHCs:	71
CHCs:	3
District Hospital:	1



Air Connectivity

Aurangabad: 12 km

Pune: 246 km

Mumbai: 361 km



Road Connectivity

Aurangabad: 19 km

Pune: 256 km

Mumbai: 355 km



Rail Connectivity

Karmad: On Site

Aurangabad: 22 km



Port Connectivity

Jalna Dry Port: 40km

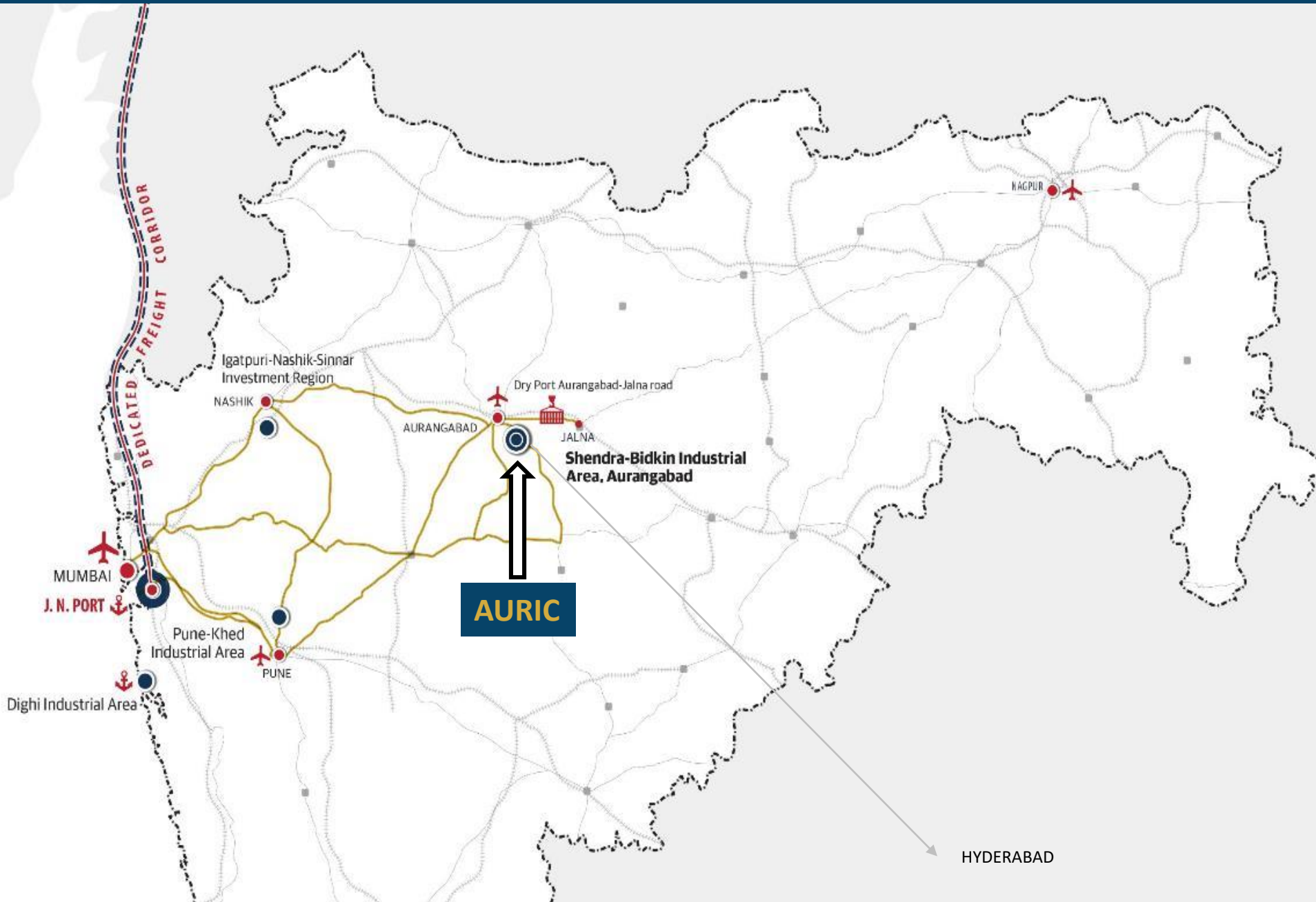
JNPT: 375 km

MBPT: 365 km

Dighi: 420 km

AURIC

AURIC – Connectivity



Distance from Aurangabad

Shendra: 8km (Jalna Road)

Bidkin: 24km (Paithan Road)

Delhi Mumbai Industrial Corridor



A Dedicated Freight Corridor connecting NCR-Delhi region to JNPT with a Length of 1,483 km between Delhi and Mumbai aimed at developing Industrial Nodes across 6 states in India.



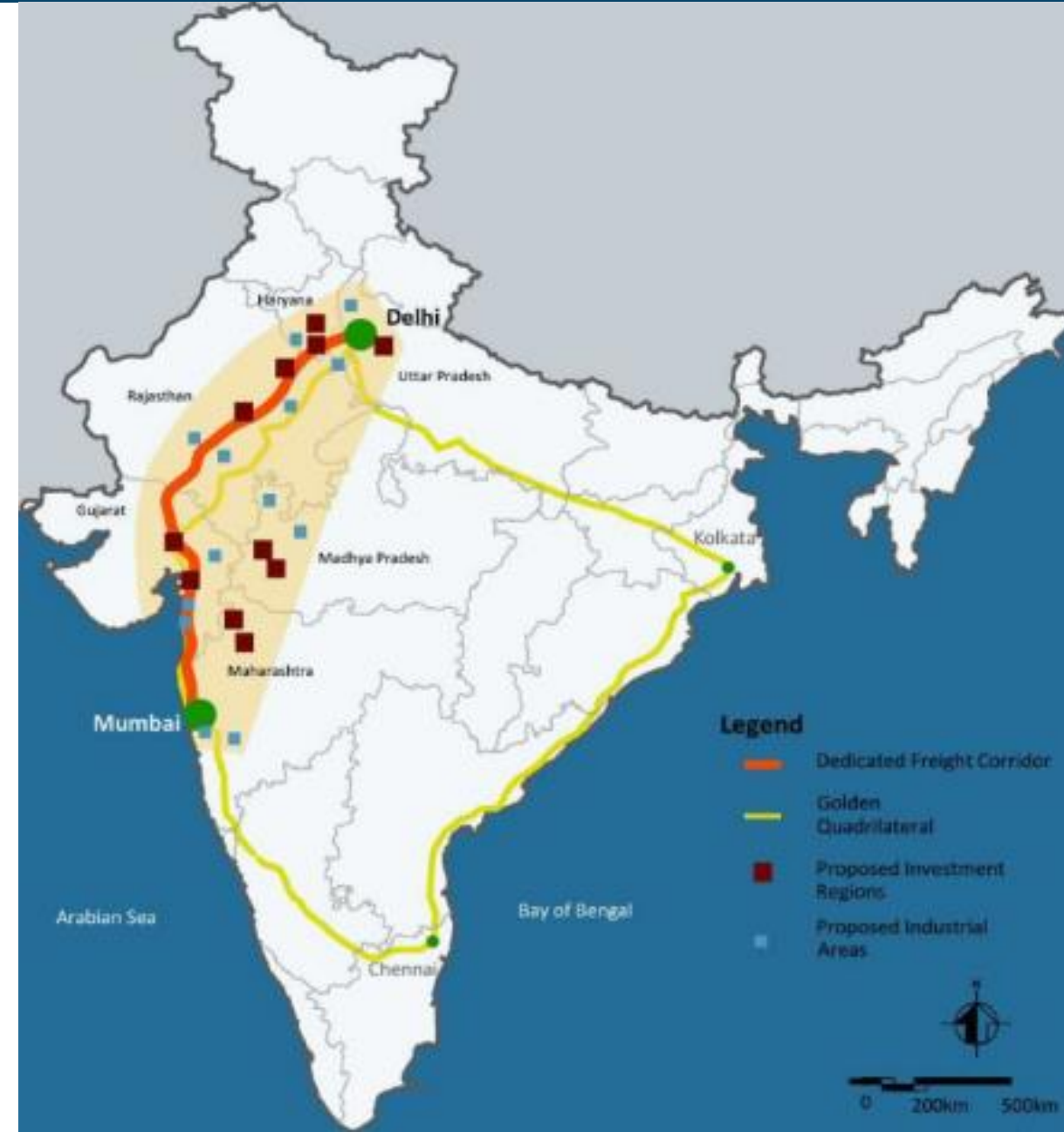
The Delhi-Mumbai Industrial Corridor (DMIC) passes through Rajasthan 39%, Gujarat 38%, Maharashtra 10%, Haryana 10%, NCR of Delhi 1.5%, Uttar Pradesh 1.5%.



Major expansion of infrastructure and industry-clusters, rail, road, port and air connectivity in the states along DMIC planned.



AURIC is being developed on 10,000 Acres as a part of the Delhi-Mumbai Industrial corridor and aims to become a hub industrial activity in the country





A notified Special Purpose Vehicle (SPV) has been formed by a joint venture between the DMIC trust and MIDC named as - **Aurangabad Industrial Township Limited (AITL)**

AURIC

Branded as AURIC (Aurangabad Industrial City) during the Make in India Week 2016.



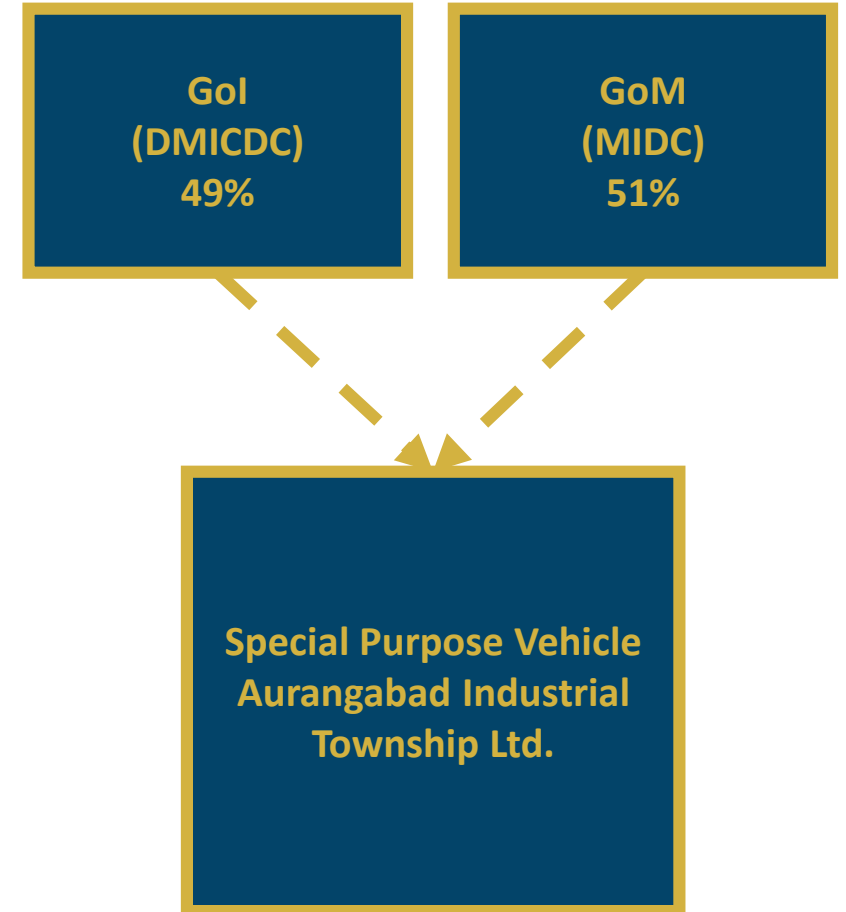
AURIC is spread over 10,000 Acres and is being developed as one of India's first Greenfield Smart Industrial Cities with over 50 plots already allotted



AITL is in the process of applying for a power distribution license to MERC.



AITL has its own set of DCR Rules and is the Single point contact for building permission, water permission etc.



AURIC – Salient Features



All utilities to the doorstep



AITL - Special Planning Authority



E – Land Management System



Single Window Clearance



Environment Clearance Obtained



Reliable 24 Hour Power Supply



Effluent Treatment Plants



Well connected - Road - Rail - Air

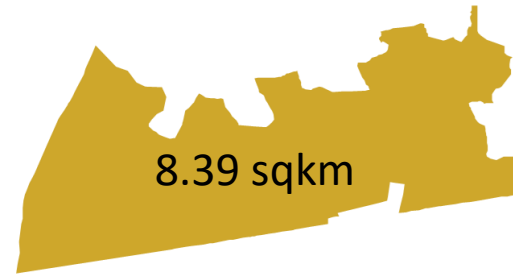
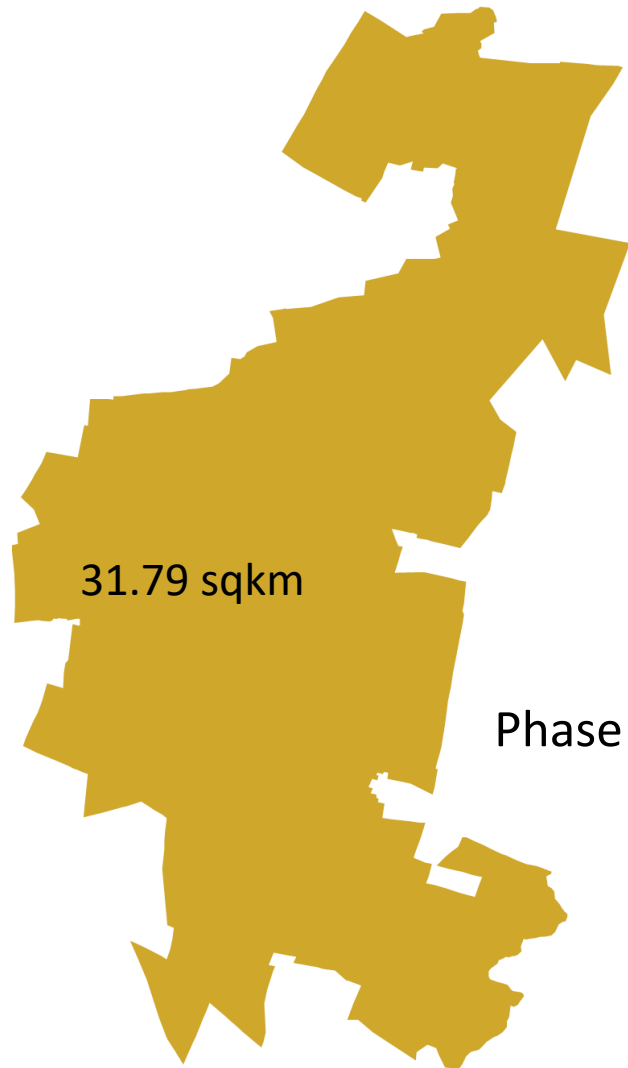


Walk to Work Concept



Online Application

AURIC – Land Resource



Infrastructure Budget
Rs. **7,947** Crore



Value of Output



Birds Eye View – Shendra



Bides Eye View - Bidkin



AURIC Hall

11,335 Sq. m

Site Area

25,084 Sq. m

Built Up Area

5 + 1

Floors + Basement

730 Days

Construction Period


4596 Sq. m

Ground Coverage



Major Investors at AURIC

Hyosung (Anchor Investor)



Company Name: **Hyosung**
Investment: **1500 Crore**
Employment: **500 (Direct)**
Date of Land Possession: **25th May 2018**
Date of Production: **September 2019**

Key Companies near AURIC



Ease of Doing Business

Critical Reform Areas

Maharashtra secured 13th Position in India on EoDB reforms

- 80 Business Reforms
- 13 Parameters

- Access to Information & Transparency
- Inspection reforms
- Paying Taxes
- Enforcing contracts
- Single Window System

- EIA Not Required for AURIC
- Land administration and Transfer of Land and Property
- E-Permits for Constructions
- Sector specific

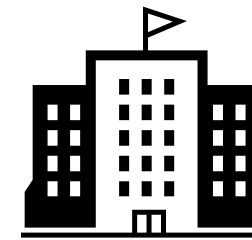
- Setting up a Business
- Land availability and Land allotment
- Environment Compliances
- Labour Regulations Enabler
- Infrastructure related utilities

Single Window System for Industry Approvals

- ▶ Aims at promoting investments and facilitating business
- ▶ Acts as a comprehensive repository of information
- ▶ Services to be integrated across multiple departments



45 Integrated
Services



12
Departments



One Stop Shop for
G2B Services to Investors

Attract Investments of Rs. 10 Lakh crores, generate employment opportunities for 40 Lakh people and attain manufacturing sector growth rate of 12% to 13% to reach GSDP share of 25% by 2023-24

- ✓ Promoting MSMEs through Public Funding, fiscal incentives, cluster promotion and Institutional support
- ✓ Fiscal Assistance for attracting high tech as well as employment generating units and mega projects
- ✓ Special incentives for underdeveloped areas
- ✓ Promoting Thrust Sectors
- ✓ Creation of land bank and growth centres
- ✓ Creation of Critical Infrastructure Fund (INR 1000 crore)
- ✓ Financial assistance for establishing Industrial parks including Food parks
- ✓ MIDC as SPA for all industrial land above 10 acres
- ✓ Strengthening MAITRI and Ease of Doing Business
- ✓ Promoting R&D
- ✓ Setting up of Global Investment Promotion Council & Export Promotion Council, Commerce & Trade department

1

Plug and Play Infrastructure

Allowing an FDI investor to utilize a **ready to use infrastructure** complete with affordable rental sheds, comprehensive utilities, expat housing, modular spaces in a 100% compliant ecosystem. Almost 40000 Acres.

2

Maha Parwana (Accelerating Permissions)

A single window clearance system for FDI investors that meet statutory norms to start operations within **48 hours**

3

Maha Jobs

Dedicated industrial employment portal, launched in July 2020, aims to help new and potential investors employ the vast and skill rich local talent in Maharashtra on the portal across **17 sectors** and **950+ job roles**

4

Investor First Programme

Relationship Manager (RM) and **Relationship Executive (RE)** will be assigned to investors for overall co-ordination and providing necessary support to the Investors on continuous basis.

5

Earmarked Land Parcels

More than 40,000 acres of land and rental space has been made available for new industries.

6

Dedicated Country Desk

We will be formally launching these in the next few weeks. This will be complimented by capacity building initiatives with Global Institutions such as WAIPA

Incentives

Thrust Sectors



Industry 4.0 (AI, 3D Printing, Internet of Things, Robotics and Nanotechnology, among others)



Agro & Food Processing (secondary & tertiary processing units)



Electronic Systems Design & Manufacturing (ESDM) & Semiconductor Fabrication (FAB)



Logistics & Warehousing



Electric Vehicles (Manufacturing, Infrastructure & Servicing)



Textile Machinery Manufacturing



Promotion of Integrated Data Centre Parks (IDCP)



Sports and Gym Equipment Manufacturing



Aerospace and Defence Manufacturing



Nuclear Power plant equipment manufacturing



Information Technology (IT) & IT enabled Services (ITeS)



Mineral / Forest based Industries



Biotechnology, Medical & Diagnostic Devices



Green Energy/ Bio Fuel Production

**Sector specific policies will be dovetailed with New Industrial Policy 2019.
Large, Mega and Ultra-mega projects in Thrust sectors shall be accorded priority in land allotment.**

Industrial & Sectoral Policy Ecosystem

Industrial Policy

- ❑ Industrial Promotion Subsidy (IPS) in form of 'Gross SGST' Abatement
- ❑ Stamp Duty Exemption
- ❑ Electricity Duty Exemption
- ❑ Power Tariff Subsidy

Plus, a host of other benefits...

Fiscal Support

- ❑ Skill Development
- ❑ Single Window Clearance (SWC)
- ❑ Investor Facilitation
- ❑ Investor After Care Cell

Non-Fiscal Support

Special Incentives

- ✓ 20% additional incentives for food processing units, agro processing units and Farmer Producer Organizations (FPOs)
- ✓ Additional incentives for Thrust Sectors, Green Energy and Industry 4.0

Sector & Region Specific Incentives

- ✓ Capital Subsidy – Textiles, ESDM & FAB, IT/ITES
- ✓ Sector Development Fund – ESDM, Textile, Start-up
- ✓ Interest Subsidy Scheme – ESDM & FAB
- ✓ Critical Infrastructure Fund – IT/ITES
- ✓ Power Subsidy – ESDM, Food, Textile, Marathwada, Vidarbha

Plus host of other benefits...

Thank you

www.auric.city

md@auric.city

jtceodmic@midcindia.org

gmmarketing@midcindia.org

